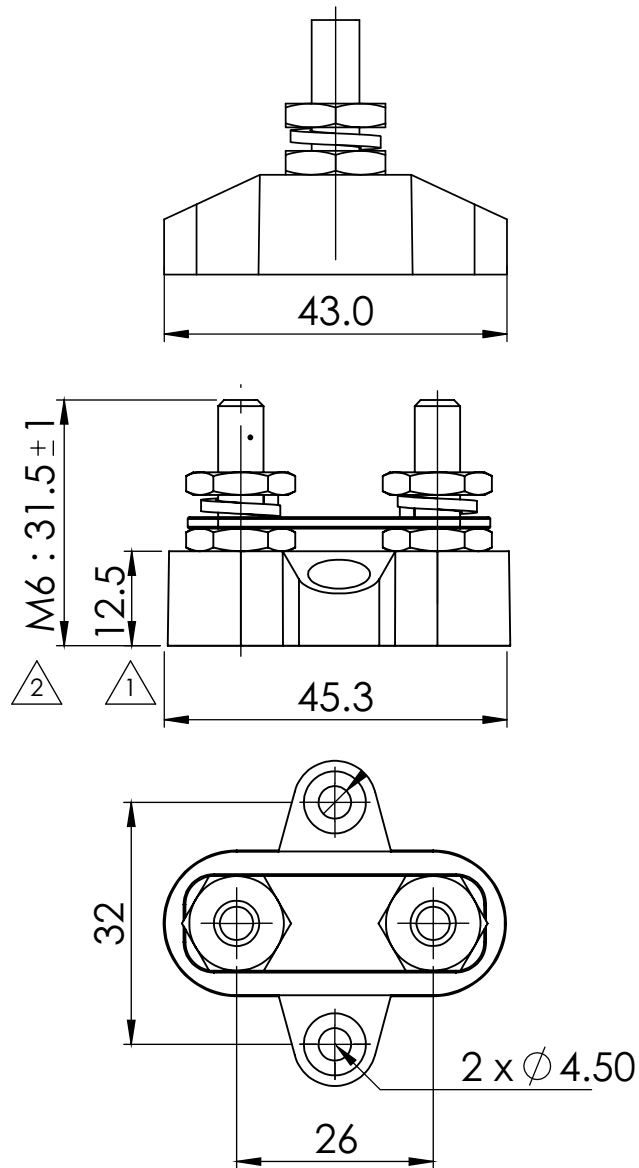
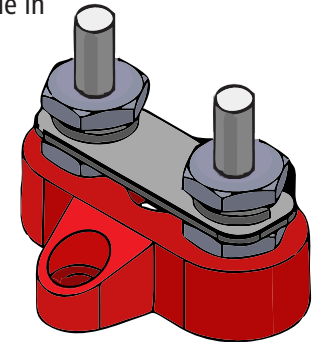


## TECHNICAL DRAWING



## TECHNICAL DATASHEET

Our Small Base Single & Dual Power Posts are compact in design and ideal for creating a centralised power distribution or grounding point. Several configurations are available in order to suit a variety of applications.



### SPECIFICATIONS

| PART NUMBER:           | DESCRIPTION:                                      | POST SIZE: | COLOUR: |
|------------------------|---------------------------------------------------|------------|---------|
| SBRD_DPL-M6            | Small Base - Dual Power Post with Connecting Link | M6         | RED     |
| Base Material:         | Nylon, Glass Fibre Reinforced                     |            |         |
| Stud Material:         | Stainless Steel                                   |            |         |
| Screw Nuts Material:   | Nickel-Plated Brass                               |            |         |
| Max Operating Voltage: | DC 48V                                            |            |         |
| Max Amp per Circuit:   | Determined by Wire Size Connected                 |            |         |

### FEATURES

- Allows terminating of heavy-duty cables for one or more connections
- Available in Red or Black
- Glass Fibre reinforced Nylon base ensures great mechanical strength and durability
- Insulated Base ensures no current leakage to mounting positions
- Heavy Duty Terminal Studs (up to M8)
- Small Base allows for easy installation in tight spaces



Trappans 8 J Ankeveen 1244RL NETHERLANDS  
E: info@vte.nl P: 035-6565560

|          |            |                      |                                                   |         |     |                                                                          |         |        |          |           |
|----------|------------|----------------------|---------------------------------------------------|---------|-----|--------------------------------------------------------------------------|---------|--------|----------|-----------|
| DATE:    | 2017.06.03 | TITLE:               | TERMINAL STUDS - SMALL BASE - DUAL POST LINKED M6 |         |     |                                                                          |         |        |          |           |
| CHK:     | DEREK      | UNIT:                | m/m                                               | REV:    | 0   | Size                                                                     | 0.5-6   | > 6-30 | > 30-120 | > 120-400 |
| DWG No.: | Bf413      | PROJ.:               | 3                                                 |         |     | Tol                                                                      | +/-0.05 | +/-0.1 | +/-0.15  | +/-0.2    |
|          |            | RATIO:               | 1:1                                               | COLOUR: | RED | REVISION: $\Delta$ Base Material Height change 11.0mm to 12.5mm          |         |        |          |           |
|          |            | DO NOT SCALE DRAWING |                                                   |         |     | $\Delta$ Screw nuts material Height change (mm) M6: 30 +/-1 to 31.5 +/-1 |         |        |          |           |