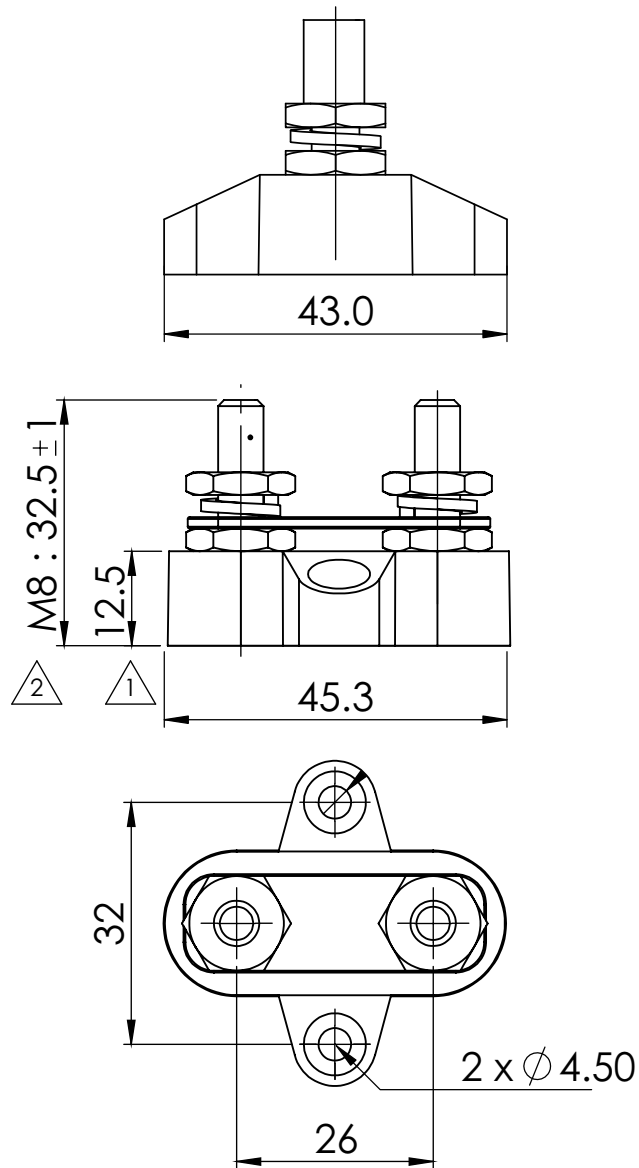
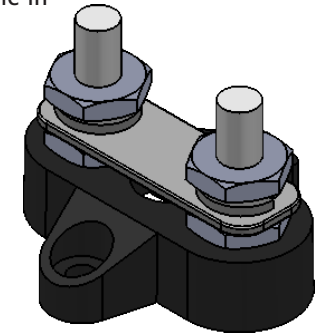


TECHNICAL DRAWING



TECHNICAL DATASHEET

Our Small Base Single & Dual Power Posts are compact in design and ideal for creating a centralised power distribution or grounding point. Several configurations are available in order to suit a variety of applications.



SPECIFICATIONS

PART NUMBER:	DESCRIPTION:	POST SIZE:	COLOUR:
SBBK_DPL-M8	Small Base - Dual Power Post with Connecting Link	M8	BLACK

Base Material:	Nylon, Glass Fibre Reinforced
Stud Material:	Stainless Steel
Screw Nuts Material:	Nickel-Plated Brass
Max Operating Voltage:	DC 48V
Max Amp per Circuit:	Determined by Wire Size Connected

FEATURES

Allows terminating of heavy-duty cables for one or more connections

Available in Red or Black

Glass Fibre reinforced Nylon base ensures great mechanical strength and durability

Insulated Base ensures no current leakage to mounting positions

Heavy Duty Terminal Studs (up to M8)

Small Base allows for easy installation in tight spaces



Trappans 8 J Ankeveen 1244RL NETHERLANDS
E: info@vte.nl P: 035-6565560

DATE:	2017.06.03	TITLE:	TERMINAL STUDS - SMALL BASE - DUAL POST LINKED M8							
CHK:	DEREK	UNIT:	m/m	REV:	0	Size	0.5-6	> 6-30	> 30-120	> 120-400
DWG No.:	Bf413	PROJ.:	3			Tol	+/-0.05	+/-0.1	+/-0.15	+/-0.2
		RATIO:	1:1	COLOUR:	BLACK	REVISION: Base Material Height change 11.0mm to 12.5mm				
		DO NOT SCALE DRAWING				Screw nuts material Height change (mm) M8: 31 +/-1 to 32.5 +/-1				